

TS-8LEN

MICROMETER SCOPE WITH LED LIGHT

What is Micrometer Scope?

This is a handheld type scope with a fixed magnification that allows for length measurement using an internal scale. There are two types of illumination available: 18 LED direct lighting and 1 LED oblique lighting. In the 7L and 8L series, there are four options for each: 20X, 50X, 100X, and 200X.

Smooth and flat objects without irregularities are recommended to be observed with the bright LED 18 direct lighting of the 8L series.

If you are observing objects with metal surfaces or irregularities, we recommend the oblique illumination of the 7L series. The oblique lighting creates shadows on the subject, enhancing its visual appearance by making it stand out.



TS-8LEN Series
(Erecting Imaging)



TS-LACLC-2

Light Controller

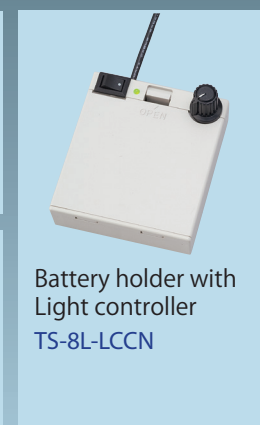
AC Adapter



TS-USBLC-2

Light controller

USB Connector



Battery holder with
Light controller
TS-8L-LCCN

| P/N | Magnification/LEDColor | Minimum Scale | Field of view | Detection bounds | W.D |
|-----------------|------------------------|---------------|---------------|------------------|------|
| TS- 8 LEN-20WT | 20×/White | 0.05mm | 9.0mm | 5.0mm | 35mm |
| TS- 8 LEN-50WT | 50×/White | 0.02mm | 3.6mm | 2.0mm | 21mm |
| TS- 8 LEN-100WT | 100×/White | 0.01mm | 2.1mm | 1.0mm | 14mm |
| TS- 8 LEN-200WT | 200×/White | 0.005mm | 1.05mm | 0.3mm | 13mm |

| P/N | Magnification/LEDColor | Minimum Scale | Field of view | Detection bounds | W.D |
|-----------------|------------------------|---------------|---------------|------------------|------|
| TS- 8 LEN-20YL | 20×/Yellow | 0.05mm | 9.0mm | 5.0mm | 35mm |
| TS- 8 LEN-50YL | 50×/Yellow | 0.02mm | 3.6mm | 2.0mm | 21mm |
| TS- 8 LEN-100YL | 100×/Yellow | 0.01mm | 2.1mm | 1.0mm | 14mm |
| TS- 8 LEN-200YL | 200×/Yellow | 0.005mm | 1.05mm | 0.3mm | 13mm |

Peripheral Accessories

| P/N | Specification |
|--------------|---|
| TS- 8 L-LCCN | Battery box with light function (AA battery x 4pcs) |
| TS-LACLC | Light Controller/AC Power Supply(100 to 240V typ) |
| TS-USBLC | Light Controller/USB Connection Adapter |

TS-7LE

MICRO SCOPE WITH LED LIGHT AND BATTERY HOLDER



TS-7LE Series
(Erecting Imaging)

| P/N | Magnification/ | Minimum Scale | Field of view | Detection bounds | W.D |
|---------------|----------------|---------------|---------------|------------------|------|
| TS-7LE-20LDW | 20× | 0.05mm | 9.0mm | 5.0mm | 35mm |
| TS-7LE-50LDW | 50× | 0.02mm | 3.6mm | 2.0mm | 21mm |
| TS-7LE-100LDW | 100× | 0.01mm | 2.1mm | 1.0mm | 14mm |
| TS-7LE-200LDW | 200× | 0.005mm | 1.05mm | 0.3mm | 13mm |

※Necessary to use AAA battery

Compatible with high-resolution USB camera with a camera adapter



Micrometer series



TS-SP-USB2
USB Camera Adapter



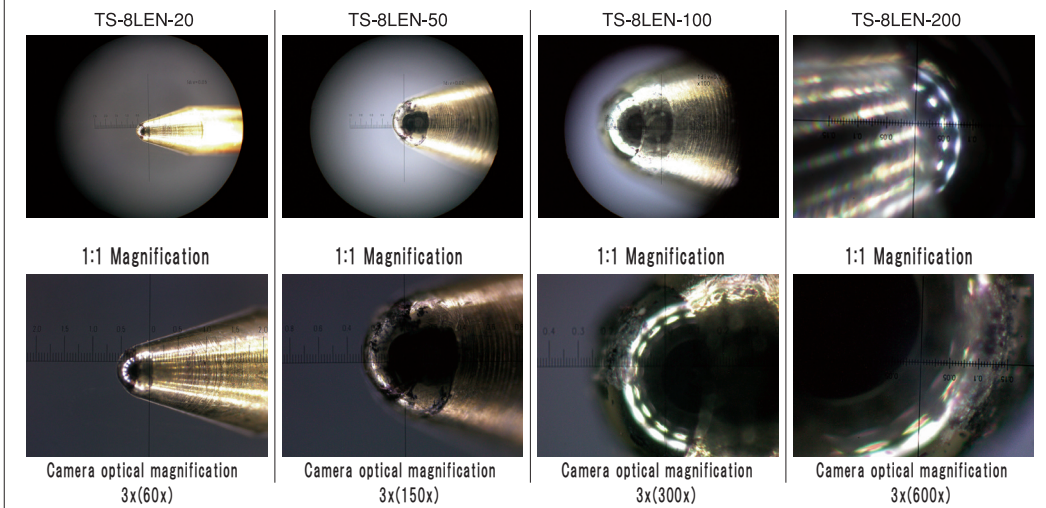
Adapter Installation Image



After visually confirming the focus on the subject, make fine adjustments while monitoring the screen on the main unit

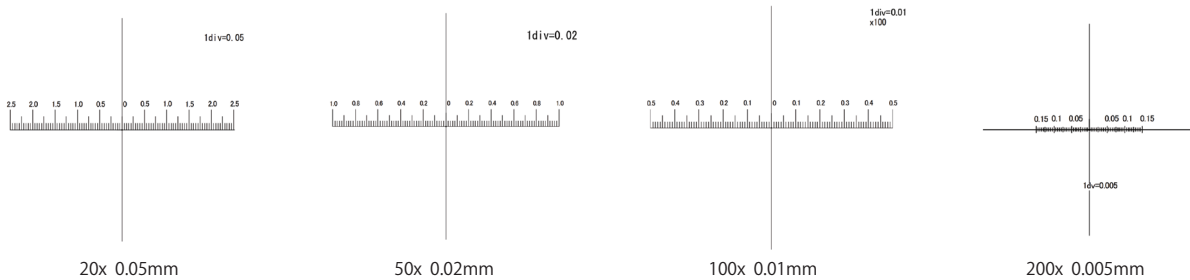
Camera Installation Image

TS-8LEN-Image of a ballpoint pen tip taken with a digital camera



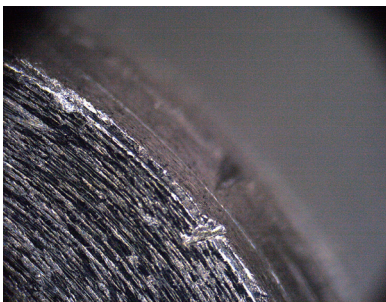
*It is possible to observe samples as upright image by using roof prism.

Scale board for each magnification rate

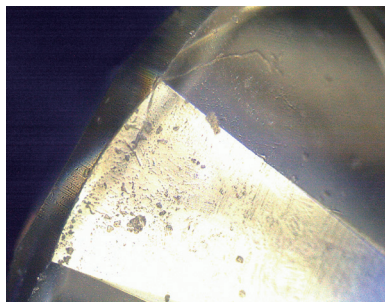


Due to the eyepiece scale, it differs from the actual dimensions.

<Sample Photography>



Metal Indentation (8LEN-50 50x)



Juwelry surface scratches (8LEN-50 50x)

SUGITOH
SINCE 1906

SUGITOH CO., LTD.

2006-20 Endo Fujisawa-shi, Kanagawa-ken, 252-0816 JAPAN

URL <http://www.sugitoh.com>